



HISTORIC SPANISH  
POINT'S PLAZA  
AND WHAT YOU MAY HAVE  
MISSED

Alexis Aponte, Schuyler Pimentel,  
Tabitha East



# BERTHA PALMER

Those who have an interest or knowledge regarding the history of various parts of Sarasota have likely heard the name “Bertha Palmer”.

A renowned woman throughout her life, Palmer had contributed greatly to the development and popularity of various parts of Florida amongst Americans in the early 1900's. In a time where much of land was being developed, Palmer spent years living on and developing the Sarasota-Manatee area, resulting in the construction and naming of many areas that are still around today. In the local Historic Spanish Point, Bertha contributed greatly to it's development, notably for preserving much of the land formation left behind by the ancient people who lived on that land long before her.

# HISTORIC SPANISH POINT



## What We Know

What makes Historic Spanish Point so notable? Bertha Palmer and her family were drawn to the land primarily because of its natural beauty and, in Palmer's eyes, potential.



## What We Don't Know

Much of Historic Spanish point is hidden by its colonial surface. Many don't know that the mounds that Bertha Palmer built upon were made by people. Historians studying the area lack information on who these people were and why they built such large, intricate mounds.



## The aqueduct



Built by Bertha Palmer's design, the aqueduct currently stands as a beautiful adornment to the Historic Spanish Point, telling a tale of her brilliance and aesthetics.

The aqueduct is also interesting in how intricately connected it is to the mounds below. While it isn't obvious, the aqueducts are designed around the mounds, regardless of whether or not Bertha Palmer knew what she was building on.

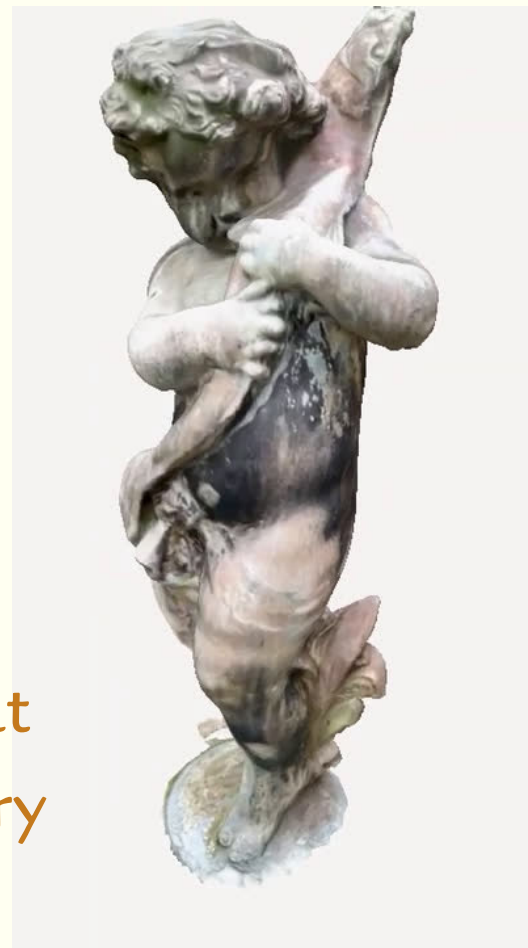




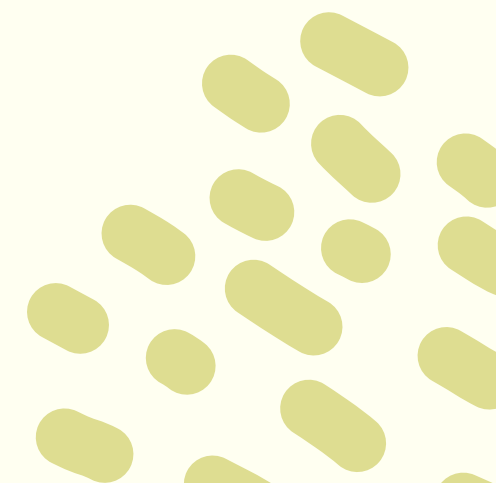
# WHAT WE'RE CONSERVING



We want to represent the full, rich history of the area. Not only do we want visitors to know about the achievements of the people who built here, but we also want to tell the story of the land beneath the buildings.



We also want to endorse the beauty of the area, to make visitors understand what brings people to this rich yet cozy environment.





# HOW CAN WE CONSERVE HISTORY?



## Overview



We hope to create virtual content that can be used to preserve, promote, and capture the beauty and history that can be found on Historic Spanish Point. We will be using a mixture of photography, LiDAR, Photogrammetry, and video to outline the various parts of the aqueduct and the sacred plaza it surrounds. While much



# WHAT WE CAN DO

TBD - Call to action about climate change PLUS  
description of using virtual content (LiDAR?) to preserve  
history.





# KEY POINTS+

We should preserve the Historical Spanish Point via digital content - there is history and beauty that should be recorded.

The Historic Spanish Point needs to present more than what is on the surface- there is an intricate narrative between the past and the present that is just barely visible on the surface.

**WE CAN** preserve the sights via digital content in an accessible and inexpensive manner. (Via smartphone!)



We are going to go more in depth than what we have ready - the history of the aqueduct on Bertha Palmer's end **AND** it's connection to the plaza (how it's built, connection to the mound, direction of plaza entrance, etc). We also want to integrate a walk across the entire aqueduct to give a sense of how far it stretches.



# ADDITIONAL NOTES - TBD



THANK  
YOU

